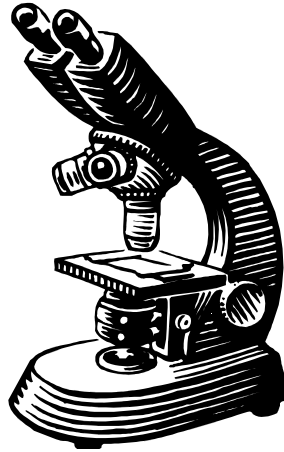
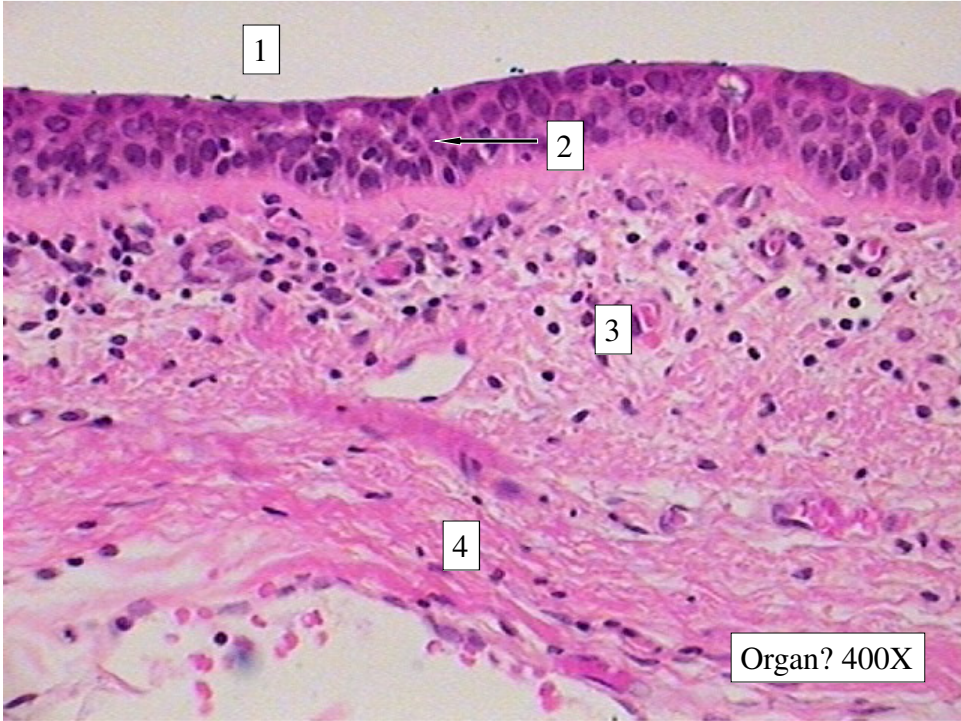
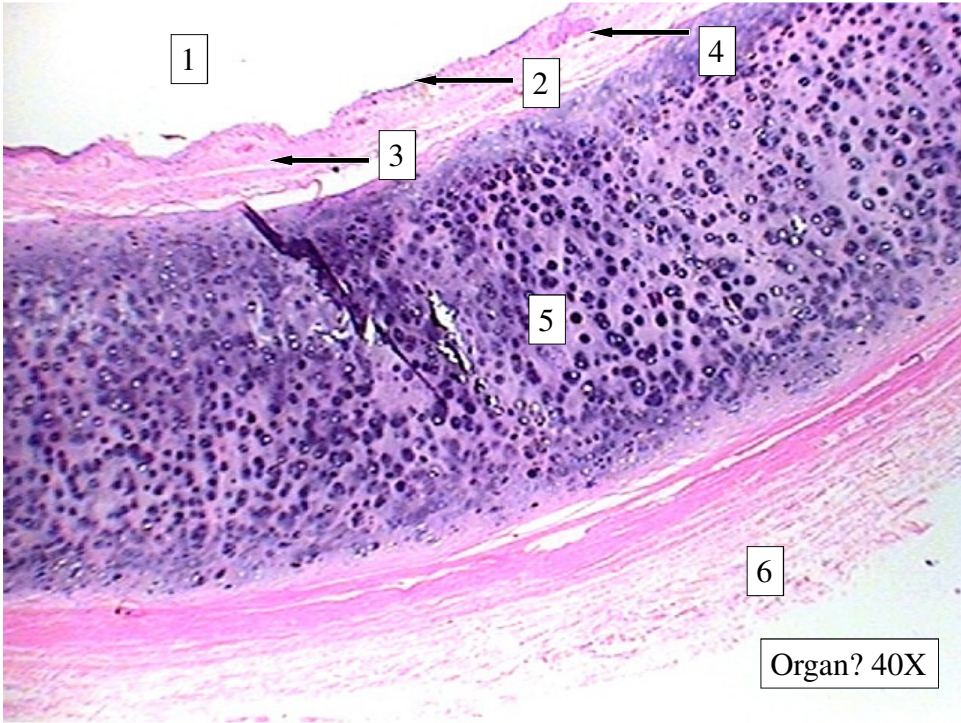


## **Bio& 242: Unit 2 / Lab 3**



### **Histology Slides for the Respiratory System**

- **Slides are presented in order of magnification**
- **As you view the following slides make sure you can accomplish these goals:**
  - 1. Can you identify the organ or duct from which the tissue sample was taken?**
  - 2. Can you identify the specific structures or layers indicated by the numbered arrows or brackets?**
- **At the end of a sequence, you will find the answers to the above for each organ or duct**



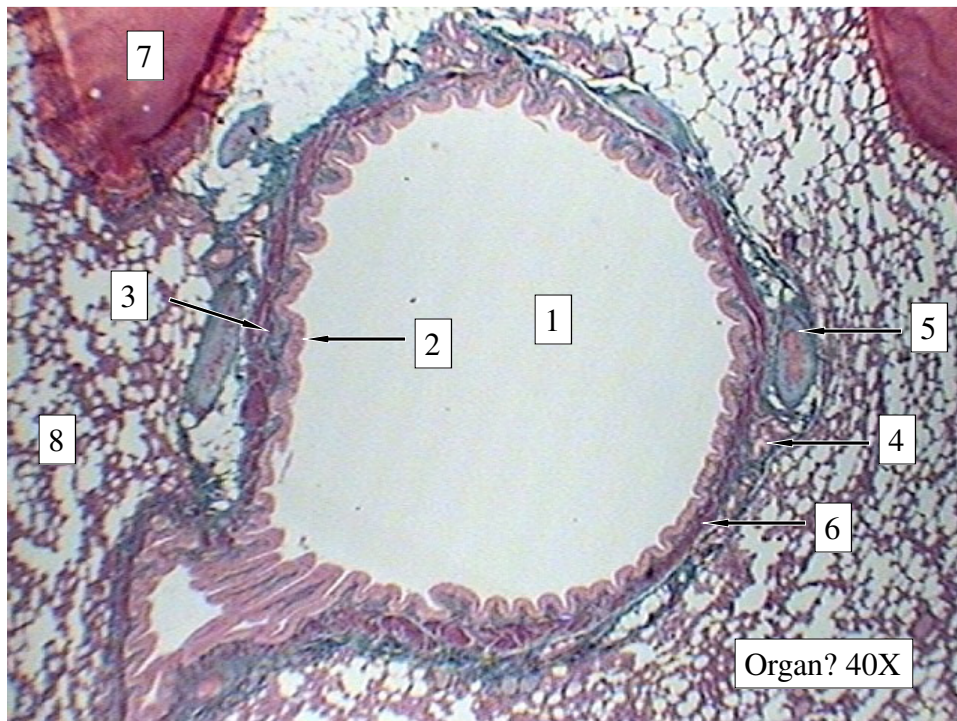
## Tissue from Trachea slides 2-3

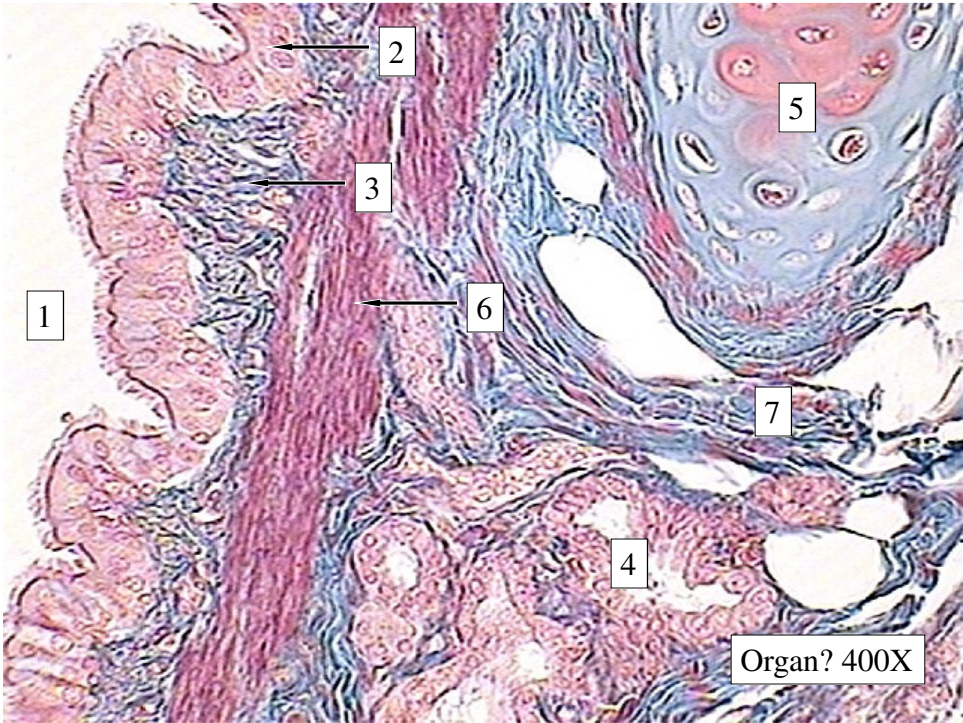
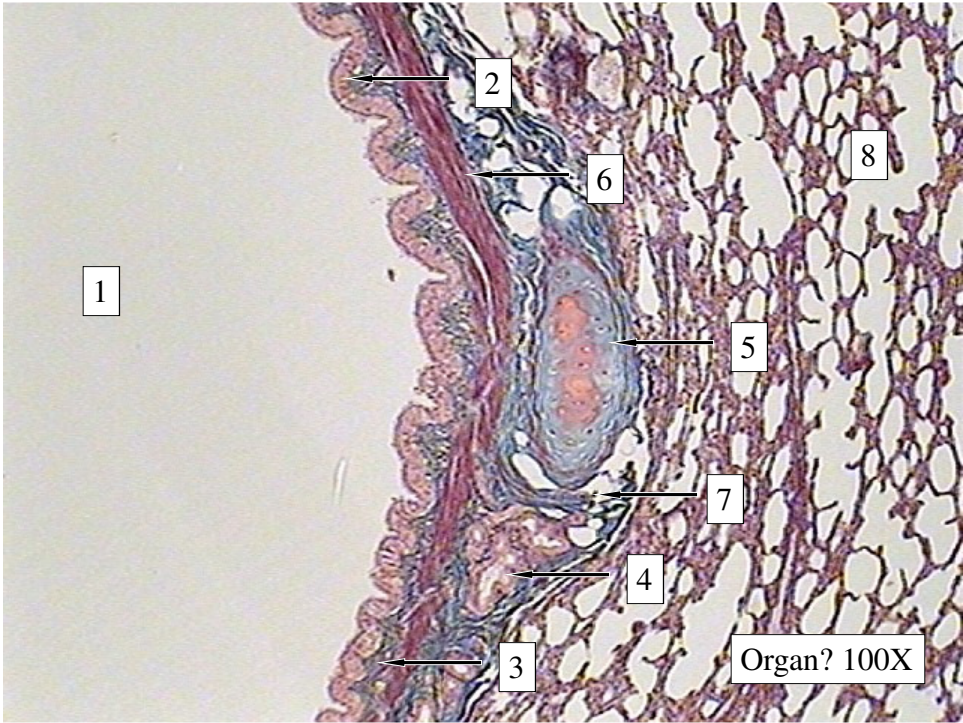
### Slide # 2: Trachea (40X)

1. Lumen of the trachea
2. Epithelium of the Trachea
3. Submucosa
4. Seromucous Gland
5. Hyaline Cartilage
6. Adventitia

### Slide # 3: Trachea (400X)

1. Lumen
2. Pseudostratified Ciliated Columnar Epithelium (Cilia not seen)
3. Lamina Propria
4. Submucosa





## **Tissue from Tertiary Bronchi slides 5-7**

### **Slide # 5: Tertiary Bronchi with Lung tissue (40X)**

- 1. Lumen**
- 2. Epithelium of the Tertiary Bronchi**
- 3. Lamina Propria**
- 4. Seromucous Gland**
- 5. Hyaline Cartilage**
- 6. Smooth Muscle**
- 7. Blood Vessel**
- 8. Lung Tissue**

## **Tissue from Tertiary Bronchi slides 5-7**

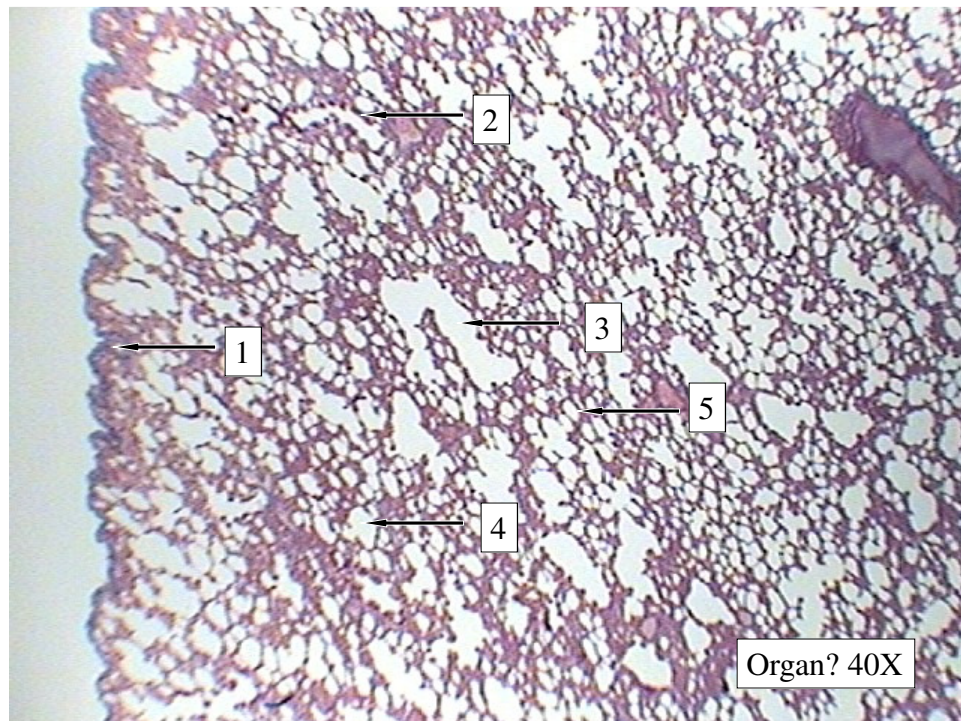
### **Slide # 6: Tertiary Bronchi with Lung tissue (40X)**

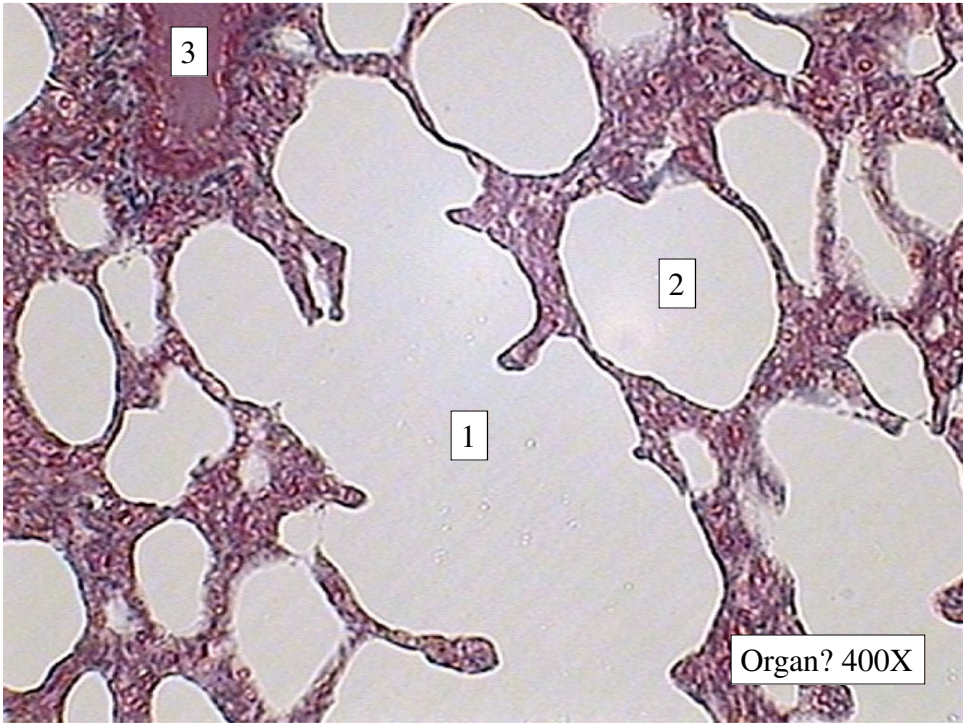
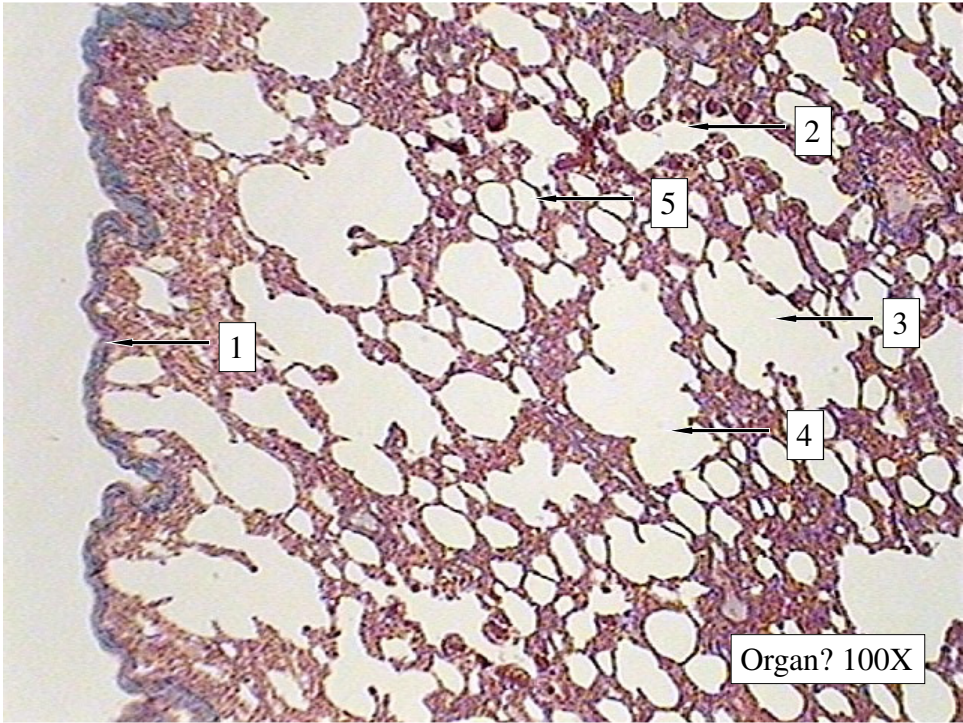
- 1. Lumen**
- 2. Epithelium of the Tertiary Bronchi**
- 3. Lamina Propria**
- 4. Seromucous Gland**
- 5. Hyaline Cartilage**
- 6. Smooth Muscle**
- 7. Submucosa**
- 8. Lung Tissue**

## Tissue from Tertiary Bronchi slides 5-7

Slide # 7: Tertiary Bronchi with Lung tissue (400X)

1. Lumen
2. Pseudostratified Ciliated Columnar Epithelium
3. Lamina Propria
4. Seromucous Gland
5. Hyaline Cartilage
6. Smooth Muscle
7. Submucosa





## **Tissue from Lung slides 11-13**

### **Slide # 11: Lung (40X)**

- 1. Visceral pleura**
- 2. Respiratory bronchiole**
- 3. Alveolar duct**
- 4. Alveolar sac**
- 5. Alveolus**

### **Slide # 12: Trachea (100X)**

- 1. Visceral pleura**
- 2. Respiratory bronchiole**
- 3. Alveolar duct**
- 4. Alveolar sac**
- 5. Alveolus**

## **Tissue from Lung slides 11-13**

### **Slide # 13: Lung (40X)**

- 1. Alveolar sac**
- 2. Alveolus**
- 3. Blood Vessel**